



We're Bringing the Mountain to MOE-HAMMAD!

"Why, I oughta
pound you!"

Announcing a Jericho High School
Hit 'n' Run Reunion in the Big Apple!

SATURDAY, JUNE 28

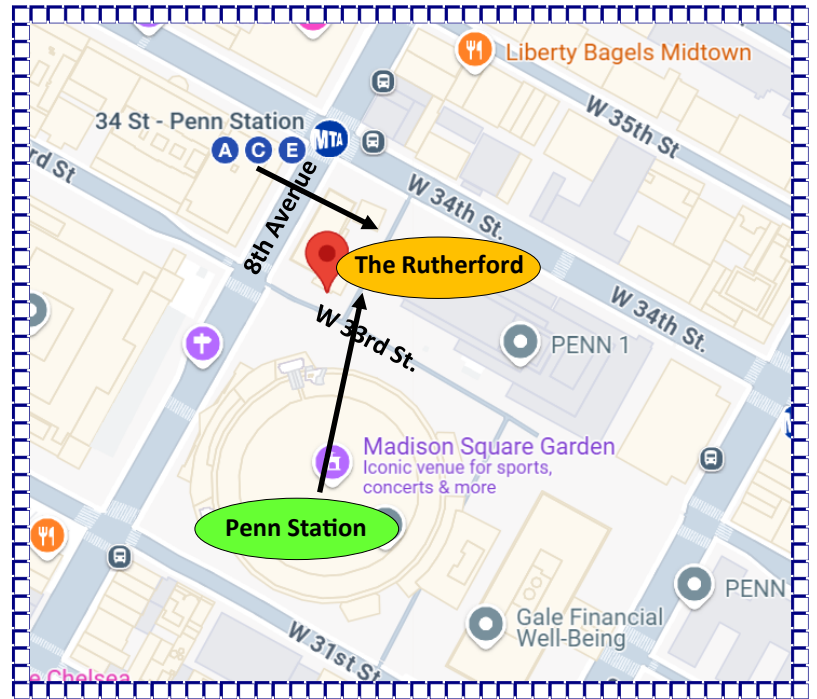
4:30 p.m. until late-late-late

THE RUTHERFORD
Rooftop Sports Bar & Restaurant

Corner of West 33rd Street and 8th Avenue
Just Steps from Penn Station! Take the Train!

A Casual Get-Together for the JHS Classes of 1968 to 1977

(Although all groovy Jericho Peeps are warmly invited)



From Day into Night

Up on the rooftop at

N.E. Corner of W.
33rd St. & 8th Ave.

THE RUTHERFORD

(212) 629-7070

www.therutherfordnyc.com/

Just across the street from Penn Station

Get There by Train

Click icon below for info and schedules



Amtrak, the Long Island Railroad, and New Jersey Transit all stop at Penn Station. The Metro-North Railroad stops only at Grand Central Station, but you can take the S-shuttle from there to Times Square/42nd Street, and either walk the nine streets to the Rutherford or hop on the 1, 2, 3 or A, C, E subway one stop south to Penn. (Don't forget your senior discount!)

Get There by Subway

Click icon below for info and subway map



The 7th Avenue 1, 2, 3 trains and the 8th Avenue A, C, E trains stop at Penn Station.

Get There by Bus

Click icon below for info and bus timetables



The following MTA bus routes stop near Penn Station: M34-SBS, M7, M20, Q32, 108, BXM4, M55, and QM24. Nearby bus stops include: 8th Ave./W. 31 St. • 7th Ave./W. 34 St. • 7th Ave./W. 32 St.

Get There by Royal Carriage with Footmen

Text Buckingham Palace in the 18th century
Be forewarned: They never text back



“Listen to ol’ Blue Eyes, baby! Why, there’s a million ways to get to the Big Apple. Ya just gotta use the ol’ noggin! And if you can make it here? You can make it anywhere, kiddo! Now scram!”

Travel in style in a horse-drawn Hanson cab! Just pray that the breeze is blowing *away* from you!



Get on the beam, Gene! Sail over Gotham on a girder. Sure, it’s windy and dangerous, but, whew, whatta view!



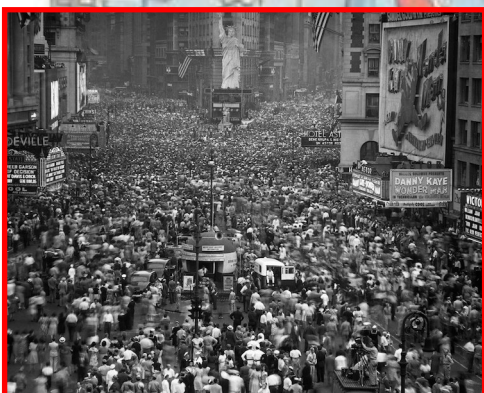
Have one of our blimps drop you off on top of Lady Liberty’s torch. Then climb on down, swim across, and you’re a tenth of the way there! Boom!



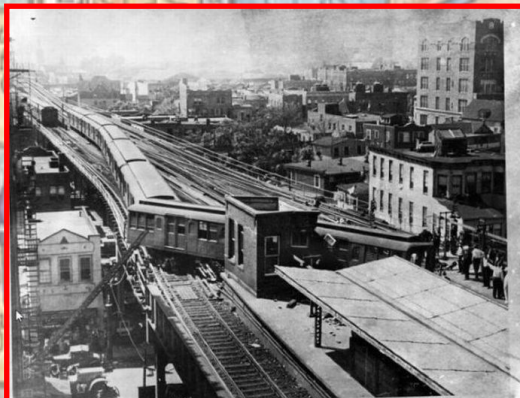
Stow away aboard Sponge-Bob Square-Pants and float down Fifth Avenue! (Sorry, not applicable in June—or, for that matter, any day other than Thanksgiving.)



Of course, you’re always welcome to drive in. We’ve got plenty of roads, not to mention potholes the size of moon craters! Get set for adventure—and a new set of shock absorbers!



You can always hoof it, too—if you don’t mind rubbing shoulders with millions of other pedestrians. (And if you don’t mind our colorful Times Square Elmos rubbing against you. And not their shoulders, either.)



Take the A train. Or just a train. Your safety always comes first! That’s our guarantee!



Just hop on the bus, Gus!

Or make like these enterprising gents, and tunnel and blast your way in! Piece of cake!

